

A

0400CET402052303

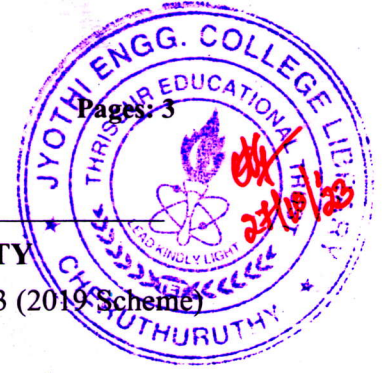
Pages: 3

Reg No.: \_\_\_\_\_

Name: \_\_\_\_\_

**APJ ABDUL KALAM TECHNOLOGICAL UNIVERSITY**

Eighth Semester B.Tech Degree Supplementary Examination October 2023 (2019 Scheme)



**Course Code: CET402**

**Course Name: QUANTITY SURVEYING AND VALUATION**

Max. Marks: 100

Duration: 3 Hours

**PART A**

*Answer any two full questions, each carries 10 marks.*

Marks

- 1 a) Explain the detailed specifications for earthwork excavation in foundation (5)
- b) Write the units of measurement for the following: (5)
- i. Brick work
- ii. Flooring
- iii. Earthwork
- iv. Skirting
- v. Cement Plaster
- 2 a) Mention any 6 purposes of estimate. (6)
- b) Explain the terms Centage Charge and Prime Cost (4)
- 3 a) Prepare the analysis of rate for 1 m<sup>3</sup> of RCC of mix of ratio 1:3:6 (10)
- with following data as per DAR- 20 mm Stone aggregate-0.70/m<sup>3</sup> @Rs.1350, 10 mm Stone aggregate-0.24/m<sup>3</sup> @Rs.1350, Carriage of stone aggregate below 40 mm 0.94/m<sup>3</sup> @Rs.103.77, Coarse Sand (zone III) 0.47/m<sup>3</sup> @ Rs.1350, Carriage of Coarse sand 0.47/m<sup>3</sup> @103.77, Portland Cement 0.22/tonne @Rs. 4940, Carriage of cement 0.22/tonne @Rs.92.24, Mason 0.10/dy @Rs.709, Beldar 1.63/day @558, Bhisthi 0.70/day @617, Hire charges for concrete mixer 0.07/day @Rs.800, Vibrator 0.07/day @ Rs.370, Sundries 13.52/L.S @ Rs.2.

**PART B**

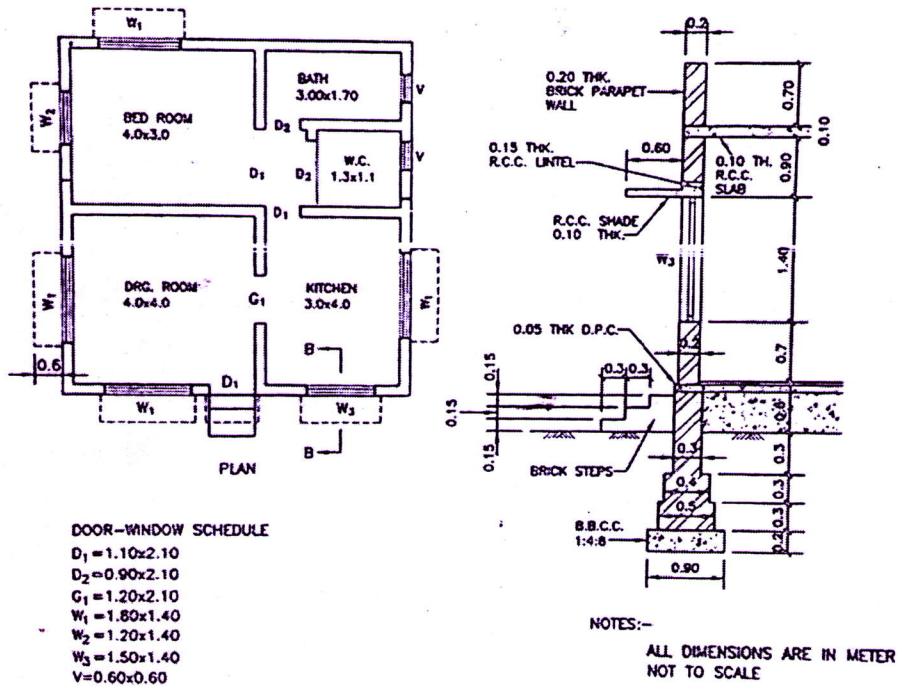
*Answer any two full questions, each carries 25 marks.*

- 4 a) Prepare a detailed estimate for earthwork for a portion of a road from the (25)
- following data:

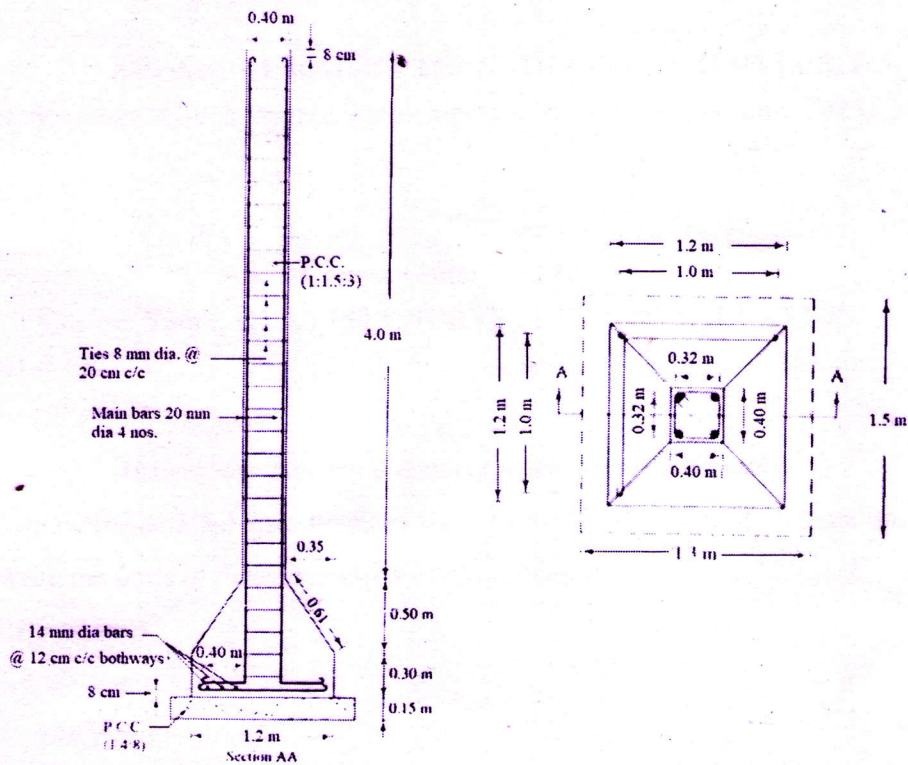
Dist. in m	0	100	200	300	400	500	600	700	800	900	1000	1100	1200
R.L. of ground	114.50	114.75	115.25	115.20	116.10	116.85	118.00	118.25	118.10	117.80	117.75	117.90	119.50
R.L. of formation	115 at zero- upward gradient 1 in 200 upto 600 m and afterwards downward gradient 1 in 400												

Formation width of road is 10 metre side slope 2: 1 in banking and 14:1 in cutting. Adopt suitable rates.

- 5 a) The figure shows details of a residential building. Calculate the quantities and costs of the following items. (Longwall- Short wall Method) (25)
- i) Earthwork excavation for foundation (Rate Rs.85/m<sup>3</sup>)
  - ii) P C C (1:4:8) for foundation (Rate Rs.3200/m<sup>3</sup>)
  - iii) Brick masonry up to plinth level (Rate Rs.3200/m<sup>3</sup>)
  - iv) Brick masonry above plinth level (Rate Rs.3500/m<sup>3</sup>)
  - v) Smooth plaster inside the rooms and ceiling. (Rate Rs.150/m<sup>2</sup>)



- 6 a) Prepare the Bar Bending schedule of the RCC beam shown below. (25)



### PART C

*Answer any two full questions, each carries 15 marks.*

- 7 a) Define Depreciation and explain any three methods of calculating depreciation. (15)
- 8 a) Differentiate Depreciation and Obsolescence (9)
- b) Differentiate between Market Value and Book Value (6)
- 9 a) A transformer costs Rs 250000 and has a useful life of 30 years. If the scrap value of the transformer is 20000 and the rate of annual compound interest is 6.5%. Then, calculate the amount to be saved annually for the replacement of the transformer after the end of 30 years (6)
- b) Explain any 3 methods of valuation (9)

\*\*\*\*